

## BRAND IDENTITY

---



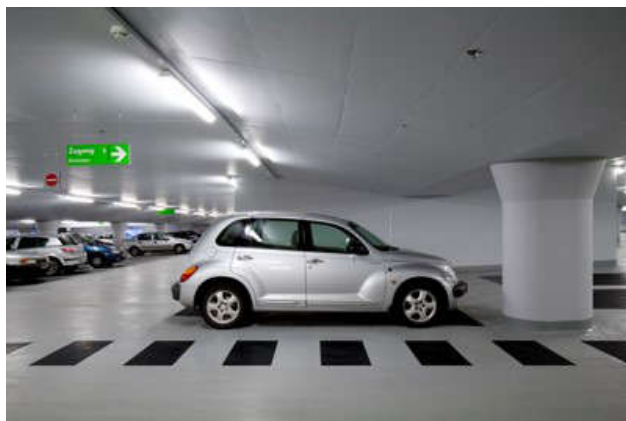
## Parking layout & routing

- I Width of parking bays minimum of 2.50m.
- I One-way direction and anti-clockwise = good overview, more convenient and safer.
- I Angled parking as a goal = parking spaces easier and faster accessible & supporting one way direction. The added value and thus realisation, however, depends on the available dimensions, such as the width of driving aisle.
- I Circulation = maximum number of spaces on access route, minimum number of spaces on exit route & recirculation options.
- I Good visibility is vital where pedestrian routes cross principal traffic routes.

Figure 40: Angled parking



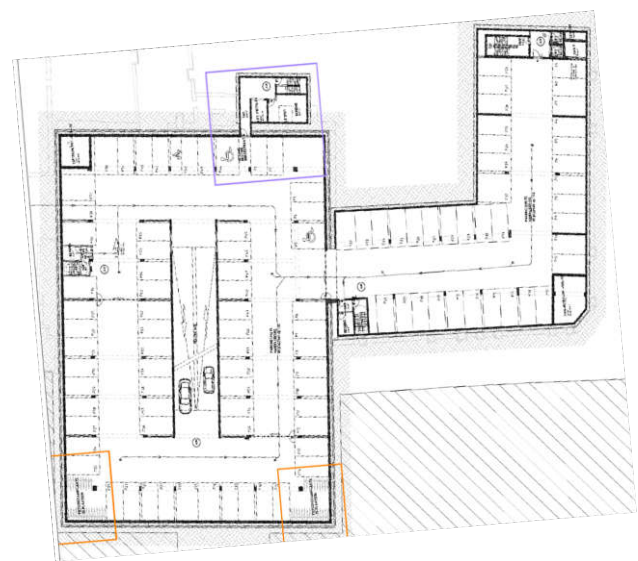
Figure 41: Clear span



Construction in relation to parking layout

- I Design of car park structure should support angled parking = clear spans and no obstructing structural elements.
- I Angled parking has less wide driving aisles = reduces the construction span compared to 90 degrees parking.

Figure 42: Example design third parties - before



Example angled parking and one-way direction - after

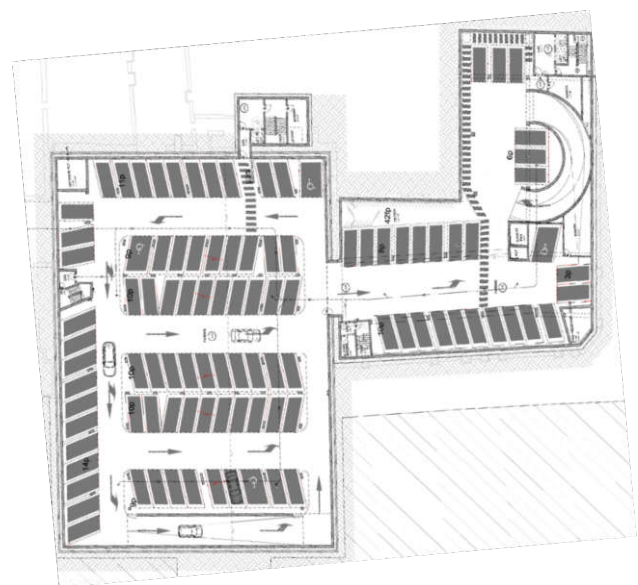


Figure 43: Angled parking, clear span, one-way



## Transparency

Clear lines of sight and social safety

- I Minimise construction: clear span, less columns, concrete walls with openings.
- I Avoiding fire compartments or realised with good transparency.
- I Glass doors in public areas and lifts.

Figure 44: Clear lines of sight - open concrete wall

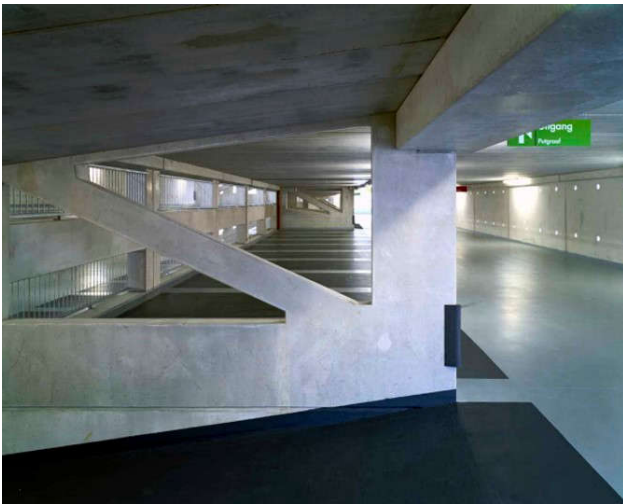


Figure 45: Clear lines of sight - open concrete wall



Figure 46: Clear lines of sight - open concrete wall with glass element

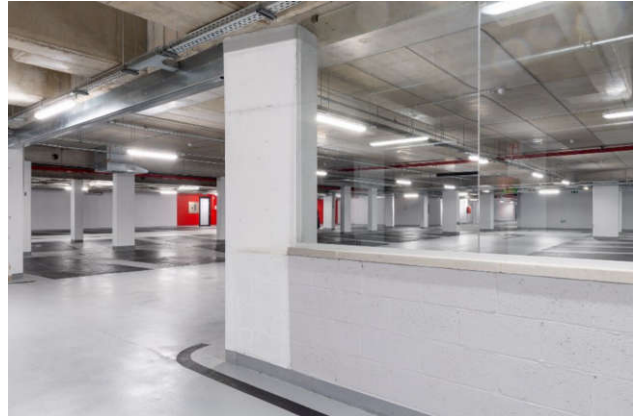


Figure 47: Clear lines of sight - glass doors in public area

